

Installer Database Setup
Oracle FLEXCUBE Universal Banking
Release 14.4.0.2.0
[November] [2020]



Table of Contents

- 1. INSTALLING ORACLE FLEXCUBE DATABASE..... 1-1**
- 1.1 INTRODUCTION 1-1
- 1.2 CREATING SCHEMA BY IMPORTING FULL DUMP 1-1
- 1.3 CREATING SCHEMA FROM SHIPMENT MEDIA 1-1
 - 1.3.1 *Backend Setup using Silent Installer..... 1-1*
 - 1.3.2 *Basic Setup using GUI Installer 1-2*

1. Installing Oracle FLEXCUBE Database

1.1 Introduction

Oracle FLEXCUBE database can be installed in one of the following methods.

- Import full dump – Import the Oracle FLEXCUBE objects into an empty schema using full dump. This is a manual activity.
- From shipment media – Load the shipment media objects into an empty schema using Installer.

These methods are discussed in detail under the following heads.

1.2 Creating Schema by Importing Full Dump

Under this method, you need to manually import the Oracle FLEXCUBE DMP file into the Oracle FLEXCUBE schema. This can be done using the following command:

```
$impdp user_name/password directory=dir_name dumpfile=dmp_file_name.dmp  
logfile=dmp_file_name.log remap_schema=from_schema_name:to_schema_name  
remap_tablespace=from_tablespace_name:to_tablespace_name transform=OID:n
```

1.3 Creating Schema from Shipment Media

Under this method, you need to create the schema from the shipment media.

1.3.1 Backend Setup using Silent Installer

Backend Setup has to be done using Silent Installer. DDL Compilation, Object Compilation and Static Data Load will be taken care as part of Backend Setup.

Before loading objects into the schema, fcubs.properties file creation must be performed with the required database details using the GUI installer (Refer [FCUBS Property File Creation.pdf](#)). After the property file is created, env.properties file, present in INSTALLER/SOFT/GUI/logs/ directory, will be automatically updated, with the details provided while creating the property file.

env.properties file present in INSTALLER/SOFT/GUI/logs/ will be automatically copied to INSTALLER/SOFT/logs/ directory as part of property file creation. Details from this env.properties are taken for further steps.

Run the <Product Processor>DBCompileRun.bat from INSTALLER/SOFT directory. DDL Compilation, Object Compilation and Static Data load will be done.

For Example: ROFC INSTALLATION-

First load SMS objects first and then ROFC objects. i.e.

- a. Run SMSDBCompileRun.bat in windows (SMSDBCompileRun.sh in linux). Note: Before running DB Compilation of any sort, please make sure that System Date Time format and language are provided as English, or otherwise DB Compilation might fail due to improper log names.

- b. After SMS object loading is completed, then initiate ROFC compilationRun
ROFCDBCompileRun.bat in windows (ROFCDBCompileRun.sh in linux)

<Product Processor>DBCompileRun.bat – PMDBCompileRun.bat (PMDDBCompileRun.sh) for Payments, ROFCDBCompileRun.bat (ROFCDBCompileRun.sh) for ROFC, POJOLoadRun.bat (POJOLoadRun.sh) for POJO Compilation and so on.

Check for the Invalid Count and make sure that the Invalid count is '0'. Please run Invalid Recompilation script(fast.sql), if required. Please provide number of threads and schema name as input while running the script.



fast.sql

For Cluster : As part of FCUBS_14.0.0.0.1 patch set Mexico Localization changes are released in cluster mode. So from FCUBS_14.0.0.0.1 patch onwards if any site wants to consume these changes, needs to run the ROFCDBCompileClusterRun.bat in windows(ROFCDBCompileClusterRun.sh in linux).

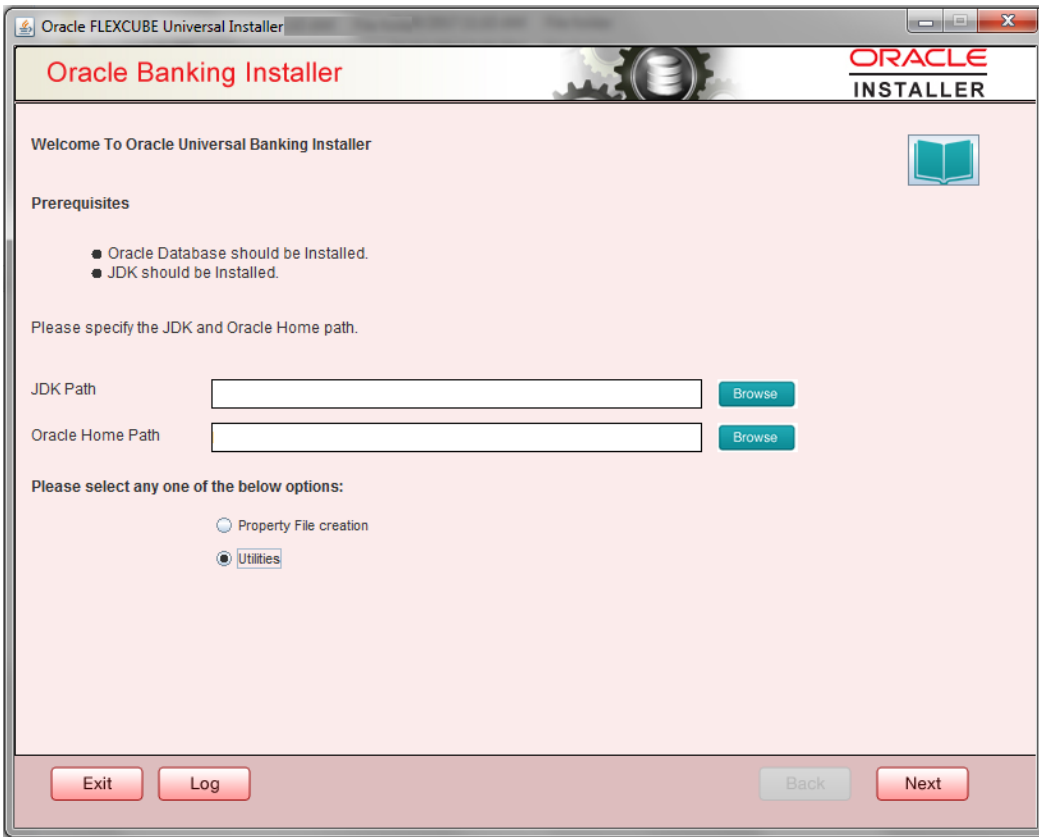
This is for KERNEL as well as cluster objects in DB schema.

Similarly, FCUBS_14.3.0.2.0 patch set onwards, if any Site wants to consume Italy Cluster changes, then they need to run the ROFCDBCompileClusterRun.bat in windows (ROFCDBCompileClusterRun.sh in linux).

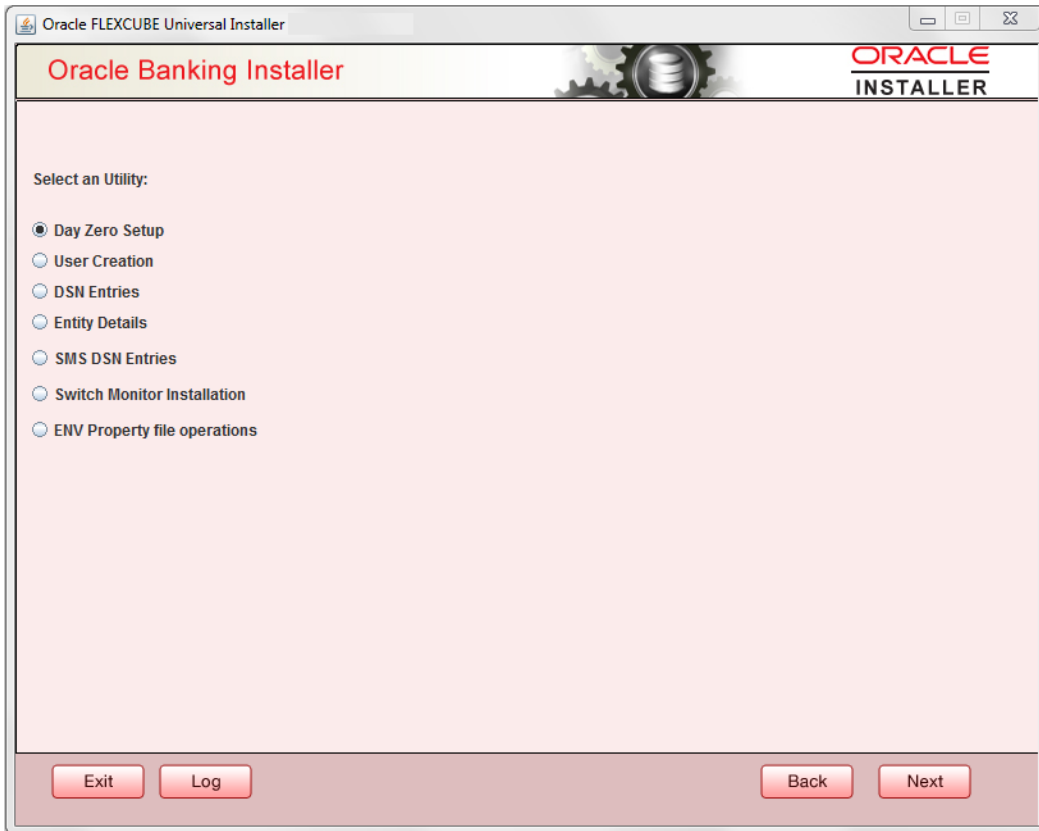
1.3.2 **Basic Setup using GUI Installer**

The steps to load objects from the shipment media are given below:

1. Double-click 'FCUBSInstaller.bat' batch file to launch Oracle FLEXCUBE Universal Installer. The following screen is displayed. Select Utilities option and click 'Next' button.



2. Select 'Day Zero Setup' in Utility Screen and click Next as shown below:



3. Click 'Next' and in the below screen. ROFC Schema details to be entered is displayed:

Oracle FLEXCUBE Universal Installer

Oracle Banking Installer ORACLE INSTALLER

Database Installation
Provide SMS schema details.

Name	Value
Username	installer
Password	••••••••
Service Name	testdb
IP Address	10.10.10.10
Port	1521
TNS Connect Descriptor	testdb

Test Connection

Provide Entity schema details Entity Id: ENTITY_ID1

Name	Value
Username	installer
Password	••••••••
Service Name	testdb
IP Address	10.10.10.10
Port	1521
TNS Connect Descriptor	testdb

Same as SMS Schema

Test Connection

Exit Log Back Next

Specify the following schema details:

User Name

Specify the user name to access the schema.

Password

Enter the schema password.

Service Name

Provide service name of database.

IP Address

Specify the IP address of the system where the database schema is installed.

Note: IP Address should be same as mentioned in the TNSnames.ora

Port

Specify the port number.

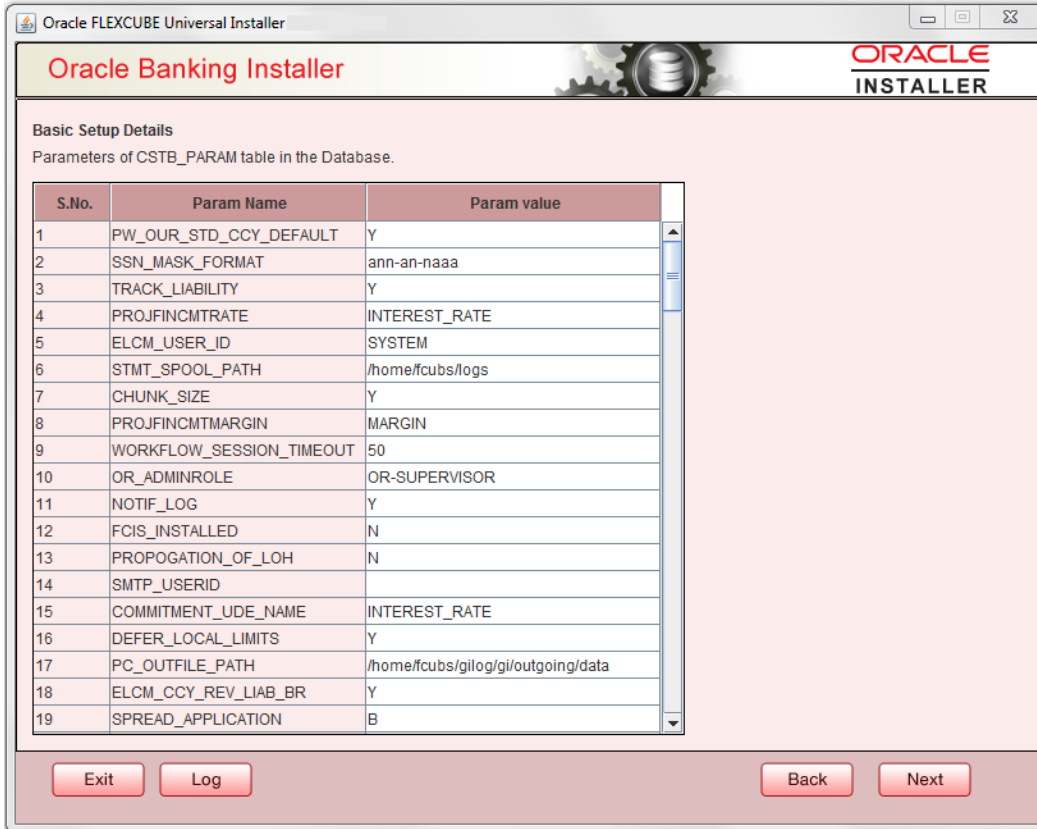
TNS Connect Descriptor

Specify the TNS Connect Descriptor.

Here Entity Schema is mandatory, atleast minimum one entry should be provided.

Entity Id value is default i.e. 'ENTITY_ID1' for first entry.
 Provide the JNDI Name for the ENTITY_ID1. By default the jndi name is 'jdbc/fcjdeVDS'
 Give the Schema Details for the Entity1.
 Here Compile In All Entities Field is 'N'. (As using the Single Entity Concept).

4. Click 'Next' and the following screen is displayed:



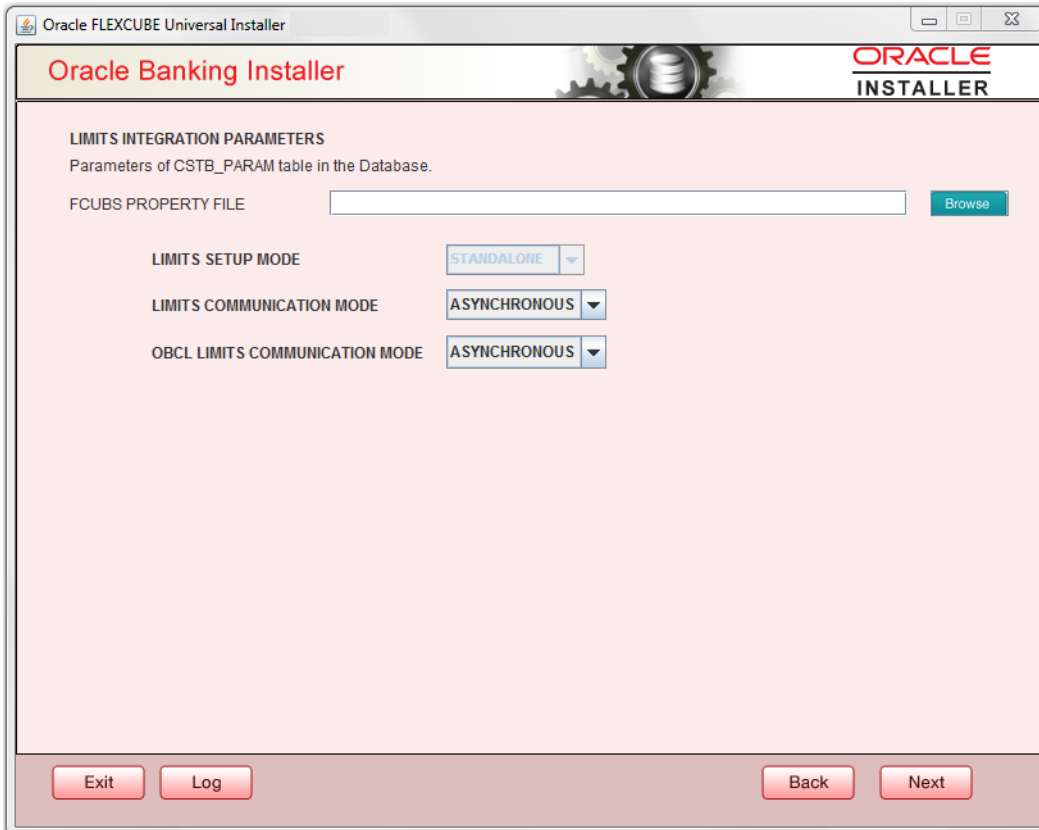
5. Screen displays basic setup details for table 'CSTB_PARAM'.

Here Oracle directory name(present in all_directories table in the schema) must be added for WORK_AREA and TRACE_AREA. Oracle directory name must be added for other required parameters also.

Oracle directory creation in the schema can be done as below :

Create or replace directory dir_name as 'directory_path';

6. Click on 'Next' button to display Limits integration Parameters Screen as shown below:



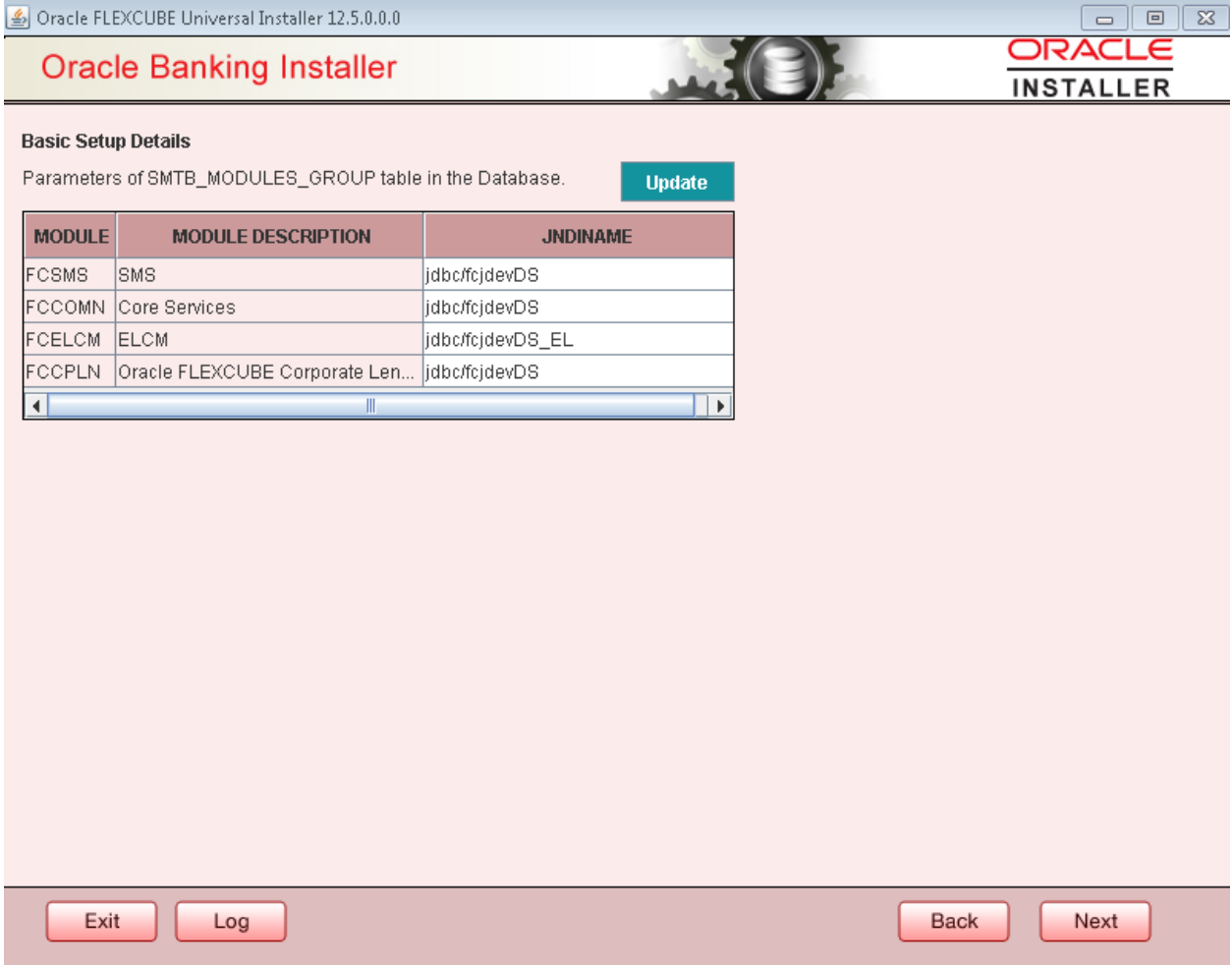
Limits Integration Parameters will be set based on values read from fcubs.properties file browsed.

In case of ELCM Embedded, Limit Communication mode will be Asynchronous by default. These parameters will be updated in CSTB_PARAM table.

7. Click on 'Next' button .Screen displays parameters for table SMTB_MODULES_GROUP

If any change is required in the JNDI name, edit the same and click on Update.

Note: SMTB_MODULES_GROUP for FCELCM (Oracle ELCM) with the JNDI name '<ENTITY_ID JNDI name>_EL'. For example, if the ENTITY_ID JNDI name is 'jdbc/fcdevDS', then you need to update JNDI name 'jdbc/fcdevDS_EL'.



8. Click 'Next'. The following screen is displayed.

Oracle FLEXCUBE Universal Installer 12.5.0.0.0

Oracle Banking Installer ORACLE INSTALLER

Basic Setup Details
Basic Details for bank and branch

Bank Code: CH0
 Bank Name: City Head Office
 Branch Code: 000
 Country Code:
 Country Description:

Cheque Number Mask: NNNN
 Host Code: HOST1
 Process Deployment: BPEL
 TimeZone: Asia/Calcutta

Basic details about dates. The Date Format must be yyyy/mm/dd.

Input Date: 2018/04/20
 Current Business Date: 2018/04/20
 Previous Business Date: 2018/04/19
 Next Business Date: 2018/04/21
 Next To Next Business Date: 2018/04/22

Exit Log Back Next

Screen displays basic setup details for bank and branch

Bank Code

Enter the bank code.

Bank Name

Enter the bank name.

Branch Code

Enter the branch code.

Country Code

Enter the Country code.

Country Description

Enter the Country Description.

Cheque Number Mask

Enter the Cheque Number Mask

Process Deployment

Choose mode of process deployment between BPEL or BPMN

Screen also displays basic setup details for dates.

Input Date

Enter the input date.

Current Business Date

Enter the current business date.

Previous Business Date

Enter the previous business date.

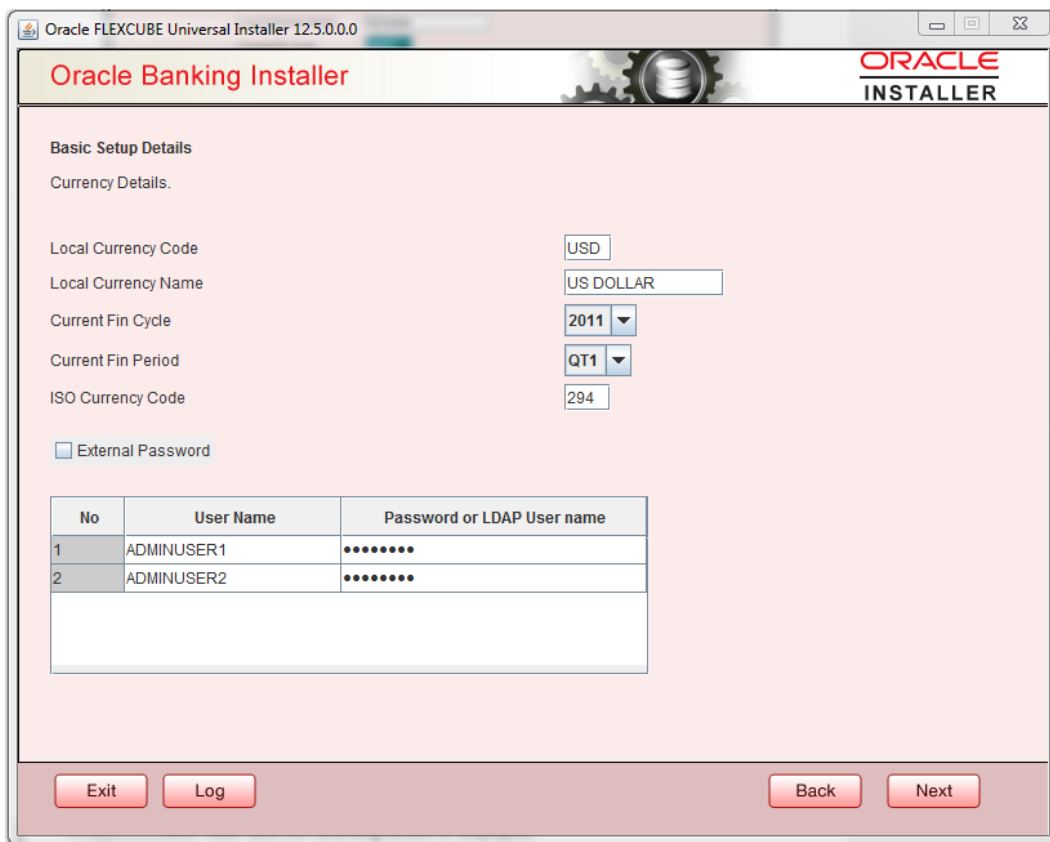
Next Business Date

Enter the next business date.

Next to Next Business Date

Enter the next to next business date.

9. Click 'Next'. The following screen is displayed.



Screen displays basic setup details for currency, User can change them.

Local Currency Code

Enter Local Currency Code

Local Currency Name

Enter Local Currency Name

Current Fin Cycle

Enter Current Financial Cycle(any year from 2011 to 2050)

Current Fin Period

Enter Current Financial Period(QT1 to QT4,M01 to M12)

ISO Currency Code

Enter ISO Currency Code.

Screen also displays basic setup details for the creating a user in FLEXCUBE.

Creation of 'SYSTEM' user is mandatory for payments processing, it needs to be created as part of static data setup.

External Password

Check this box to specify the external password.

User Name

Displays the user name. Change the user name if required.

Password or LDAP User Name

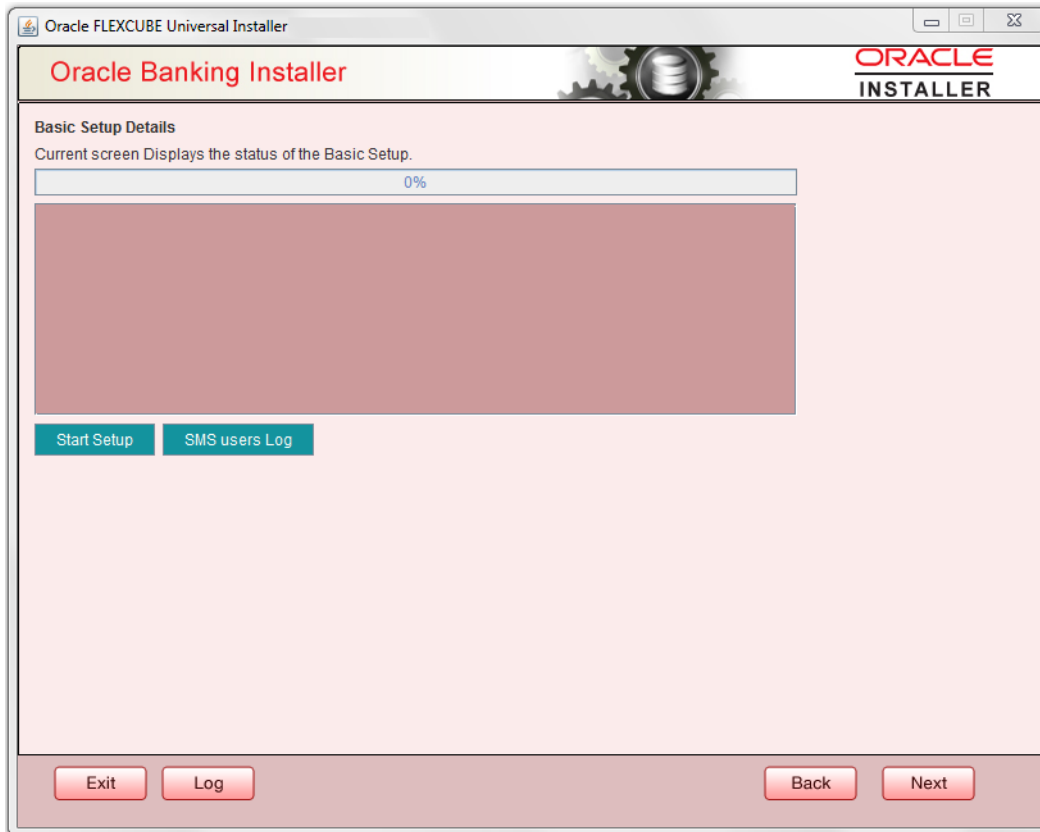
Specify the password and it is mandatory. You can use the following characters in the password:

- Alphabets in uppercase
- Alphabets in lowercase
- Numerals

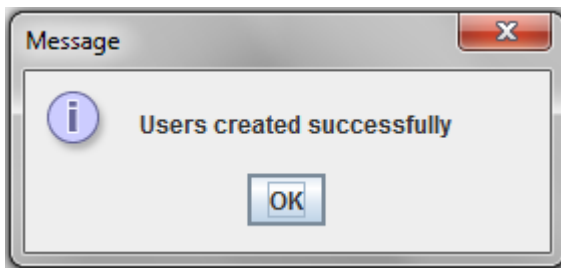
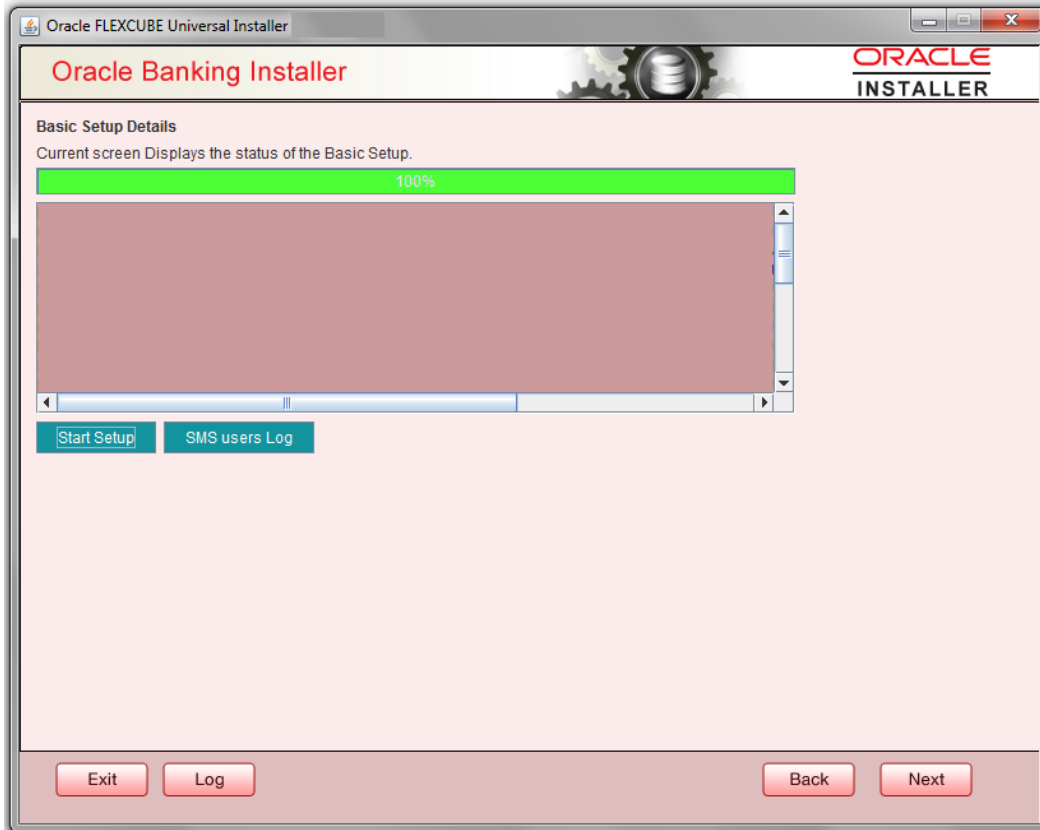


You cannot use '_' (underscore) in the password.

10. Click 'Next' and the following screen is displayed:



11. Click 'Start Setup' button to compile the entries. On completion the below Screen will be seen.
User created logs can be viewed by clicking SMS uses Log button.



This completes the basic setup process.



Installer Database Setup
[November] [2020]
Version 14.4.0.2.0

Oracle Financial Services Software Limited
Oracle Park
Off Western Express Highway
Goregaon (East)
Mumbai, Maharashtra 400 063
India

Worldwide Inquiries:
Phone: +91 22 6718 3000
Fax: +91 22 6718 3001
<https://www.oracle.com/industries/financial-services/index.html>

Copyright ©[2007], [2020], Oracle and/or its affiliates. All rights reserved.

Oracle and Java are registered trademarks of Oracle and/or its affiliates. Other names may be trademarks of their respective owners.

U.S. GOVERNMENT END USERS: Oracle programs, including any operating system, integrated software, any programs installed on the hardware, and/or documentation, delivered to U.S. Government end users are "commercial computer software" pursuant to the applicable Federal Acquisition Regulation and agency-specific supplemental regulations. As such, use, duplication, disclosure, modification, and adaptation of the programs, including any operating system, integrated software, any programs installed on the hardware, and/or documentation, shall be subject to license terms and license restrictions applicable to the programs. No other rights are granted to the U.S. Government.

This software or hardware is developed for general use in a variety of information management applications. It is not developed or intended for use in any inherently dangerous applications, including applications that may create a risk of personal injury. If you use this software or hardware in dangerous applications, then you shall be responsible to take all appropriate failsafe, backup, redundancy, and other measures to ensure its safe use. Oracle Corporation and its affiliates disclaim any liability for any damages caused by use of this software or hardware in dangerous applications.

This software and related documentation are provided under a license agreement containing restrictions on use and disclosure and are protected by intellectual property laws. Except as expressly permitted in your license agreement or allowed by law, you may not use, copy, reproduce, translate, broadcast, modify, license, transmit, distribute, exhibit, perform, publish or display any part, in any form, or by any means. Reverse engineering, disassembly, or decompilation of this software, unless required by law for interoperability, is prohibited.

The information contained herein is subject to change without notice and is not warranted to be error-free. If you find any errors, please report them to us in writing.

This software or hardware and documentation may provide access to or information on content, products and services from third parties. Oracle Corporation and its affiliates are not responsible for and expressly disclaim all warranties of any kind with respect to third-party content, products, and services. Oracle Corporation and its affiliates will not be responsible for any loss, costs, or damages incurred due to your access to or use of third-party content, products, or services.